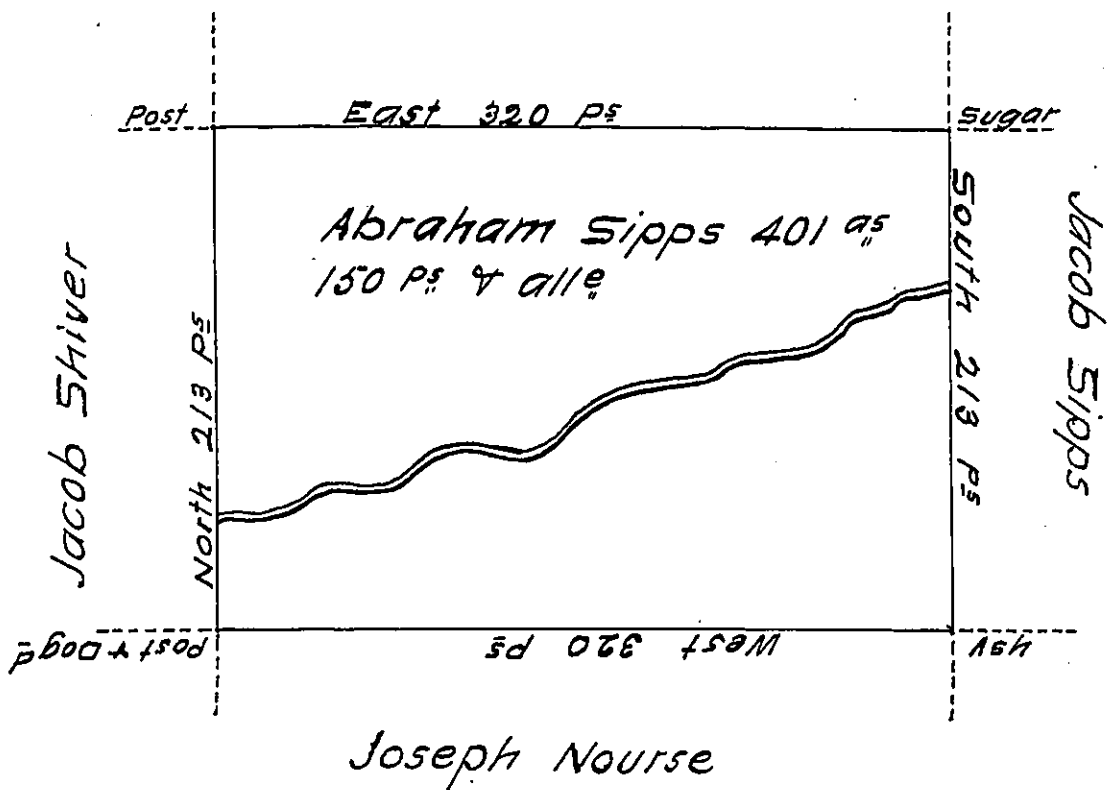


W<sup>m</sup> Skillin

Situate on the west of French Creek in Allegheny County containing 401 a<sup>s</sup> 150 P<sup>s</sup> and allowance of six P cent. for roads & surveyed the 4<sup>th</sup> day of June 1795 in pursuance of a warrant bearing date the 21<sup>st</sup> day of April 1794

W<sup>m</sup> Power DY Sr.

To Daniel Brodhead Esq<sup>r</sup> }  
 Surveyor General }

IN TESTIMONY that the above is a copy of the original remaining on file in the Department of Internal Affairs of Pennsylvania, made conformably to an Act of Assembly approved the 16th day of February, 1833, I have hereunto set my Hand and caused the Seal of said Department to be affixed at Harrisburg, this eighth day of September 1911

*Henry Howell*  
 Secretary of Internal Affairs.